

# GREEN LYNK



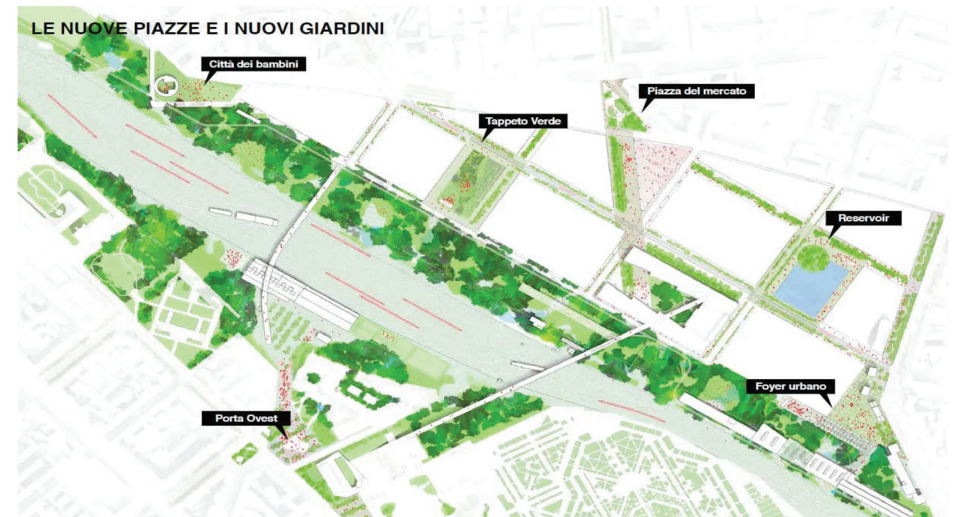
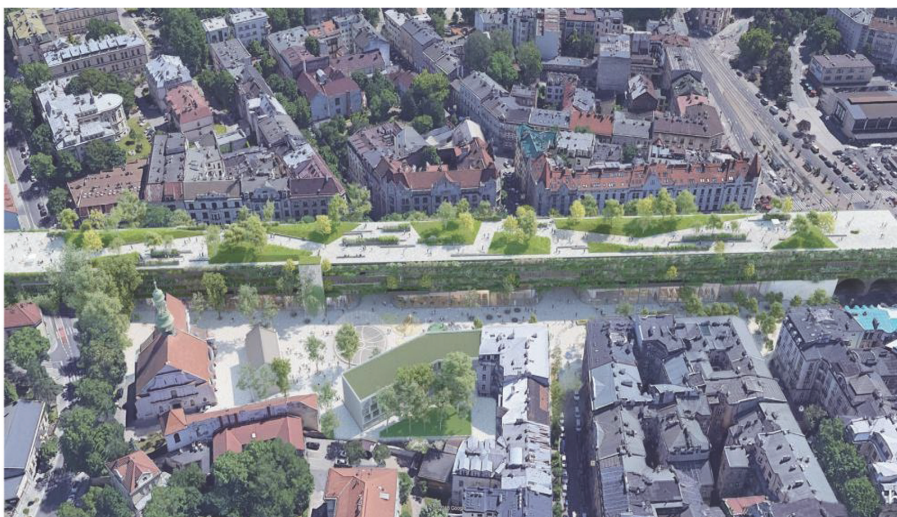
ALAOUI KENZA  
TILEMAN KÜHL  
MAJA KRZYŻANOWSKA  
OLGA WĘDRYCHOWSKA  
ALICJA WÓJCIK

# INSPIRATIONS

**"NEW LIFE BETWEEN FLYOVERS"**  
**ARCHITECTURAL COMPETITION**  
TON VENHOEVEN C.S. ARCHITEKTEN B.V.  
FROM THE NETHERLANDS  
2018, CRACOW, POLAND

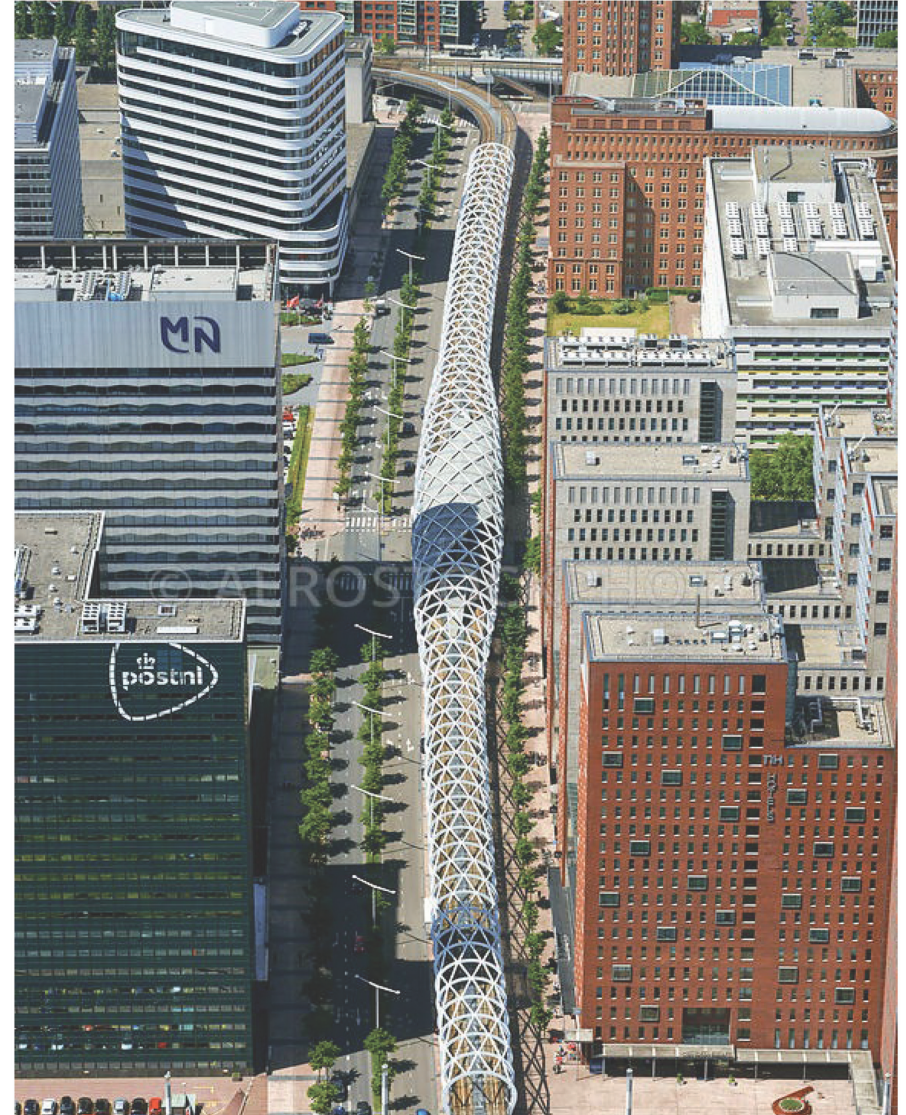


**FARINI COMPETITION "AGENTS OF CLIMATE"**  
OMA AND LABORATORIO PERMANENTE  
2019, MILAN, ITALY

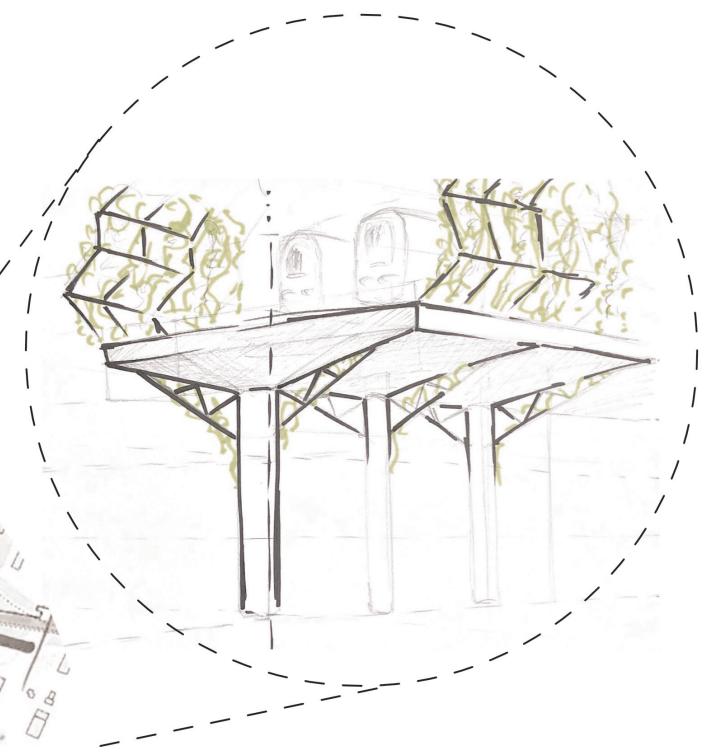


# INSPIRATIONS

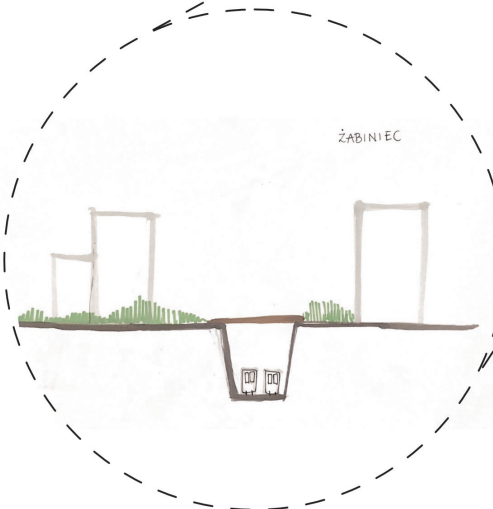
**RANDSTADRAIL STATION**  
ZWARTS & JANSMA ARCHITECTEN  
2006, THE HAGUE, THE NETHERLANDS



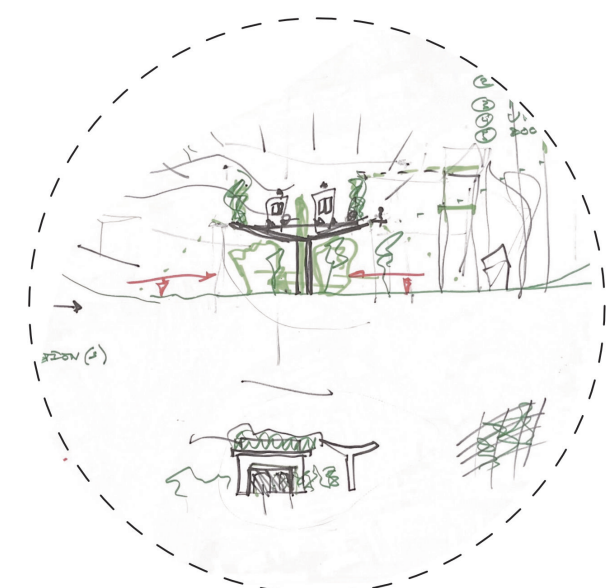
# FIRST IDEAS

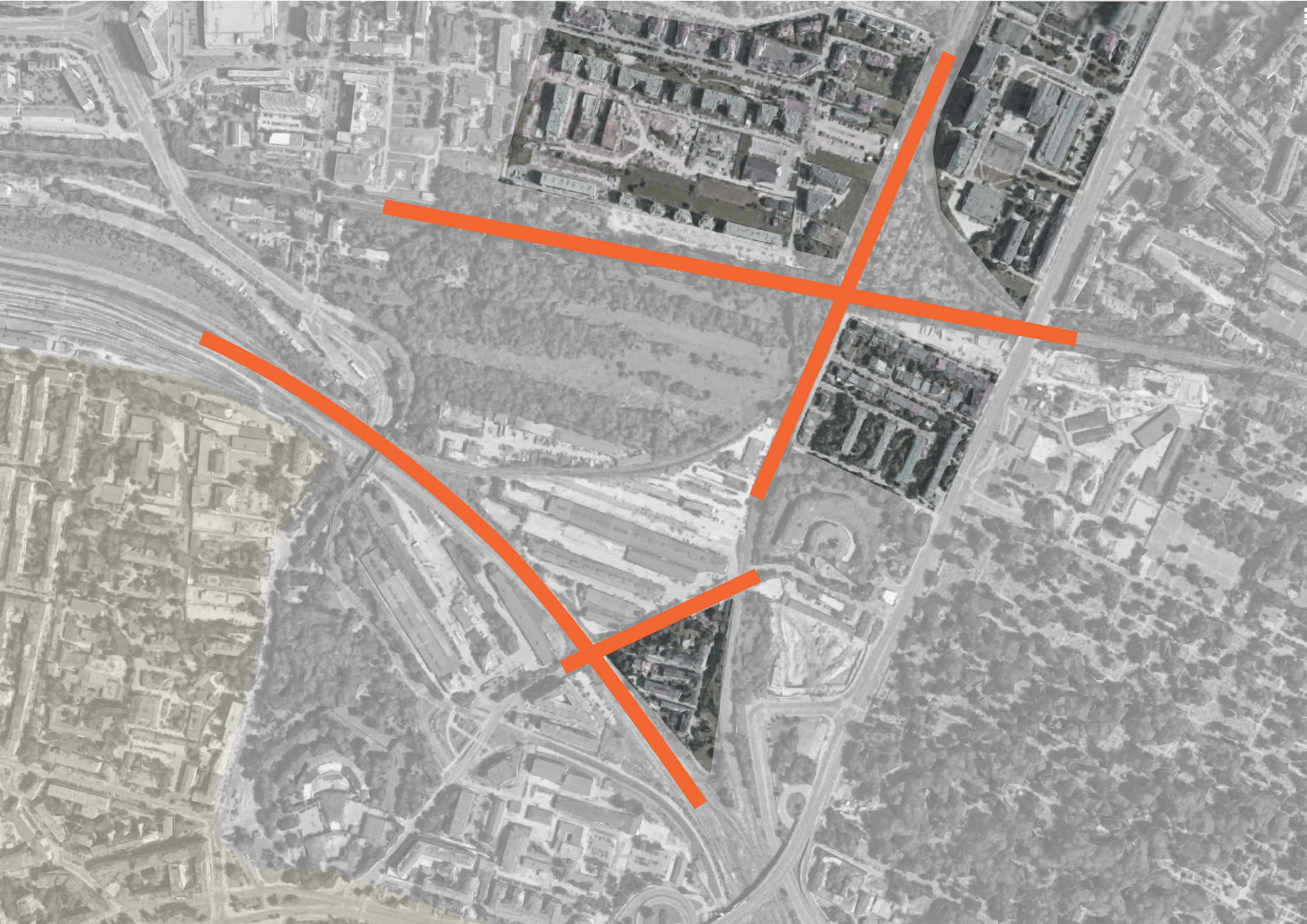


MOVING TRAIN AND TRAMLINE ABOVE THE GROUND LEVEL TO AVOID DIVIDING AREA AND CREATE SPACE FOR CROSSING ROAD



COVERED GARGO TRAIN LINE TO LET RESIDENTS CROSS THE ROAD EASILY







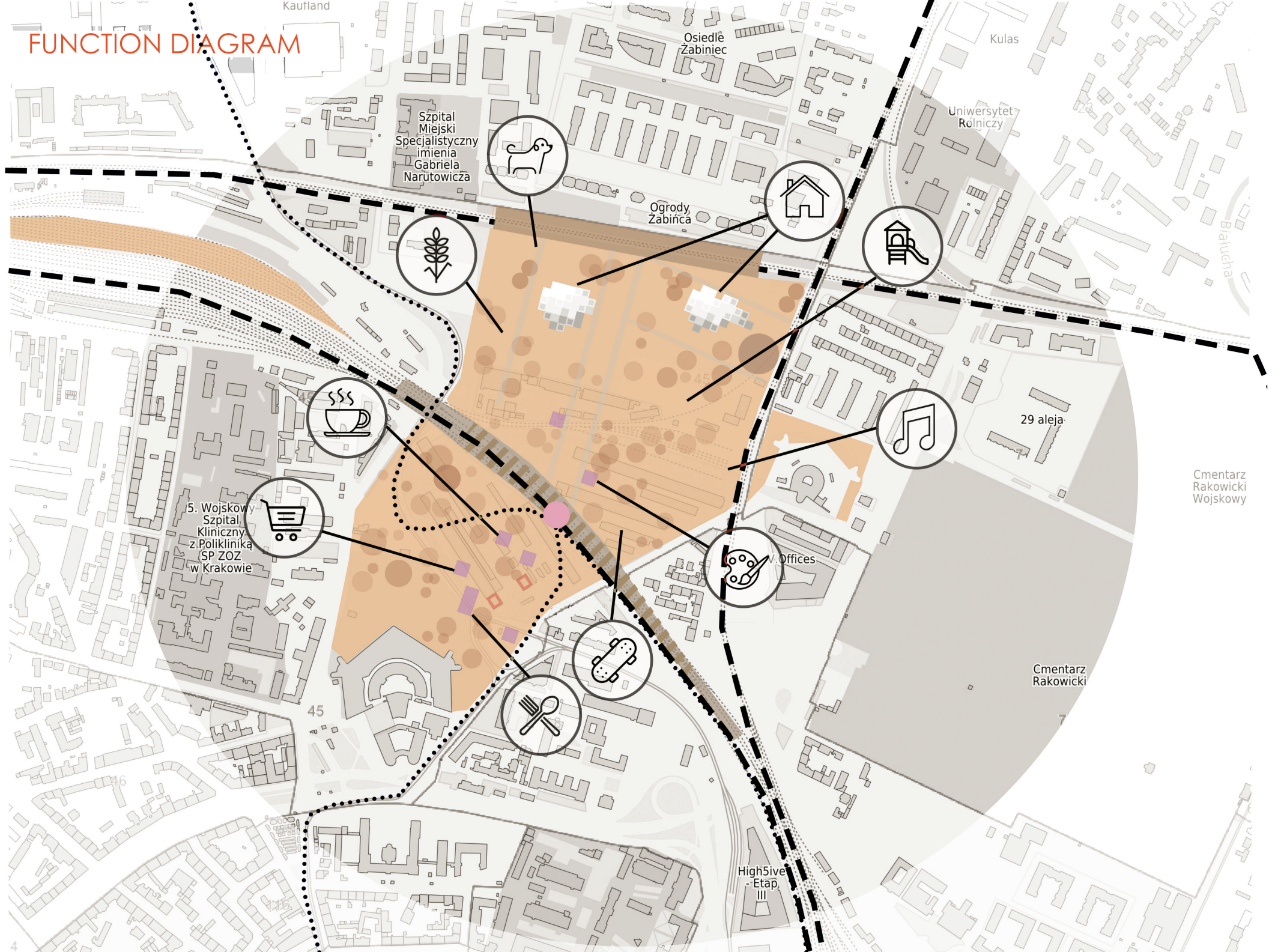
# CONCEPT



# MASTERPLAN



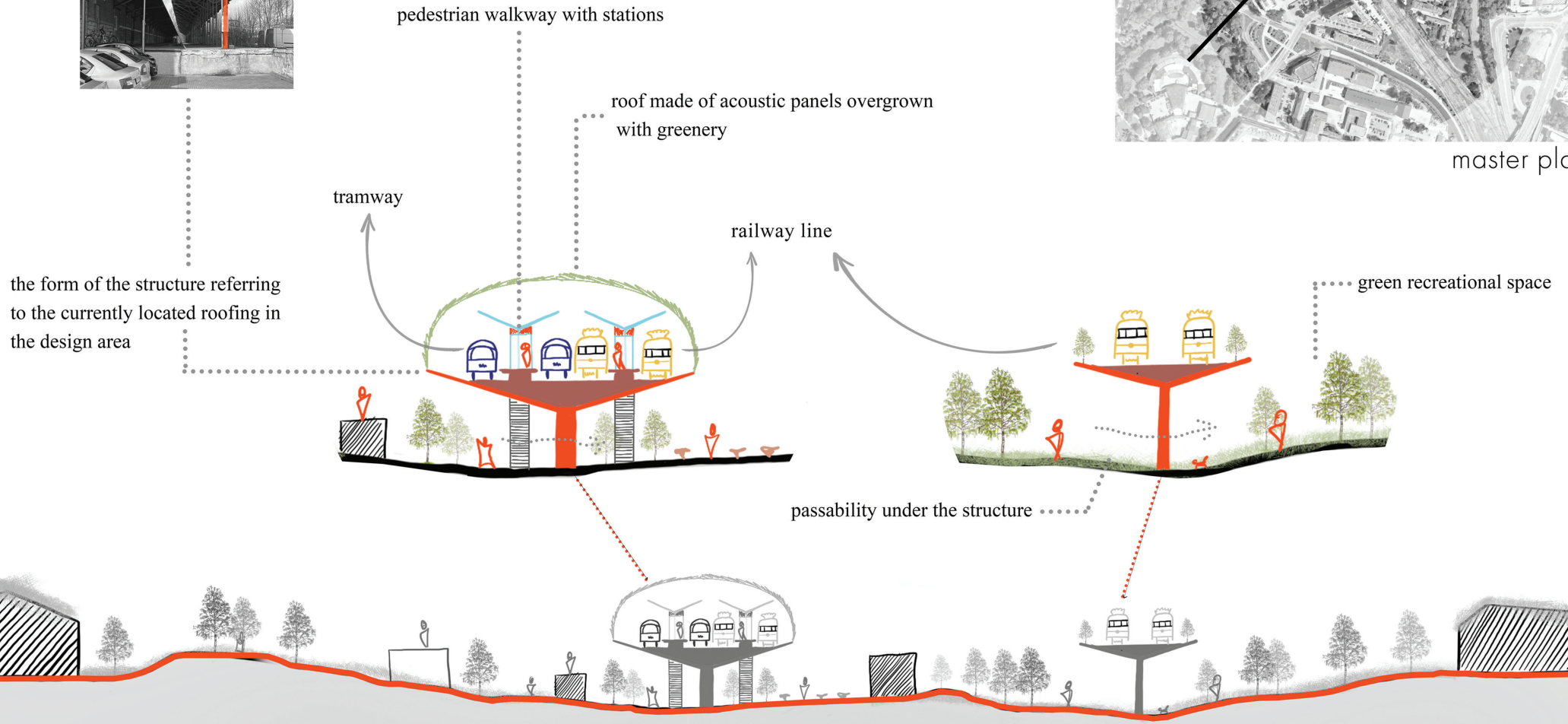
# FUNCTION DIAGRAM



# MIND MAP - SECTION - DIAGRAMS



master plan



section



ELEVATION

TOP VIEW

